


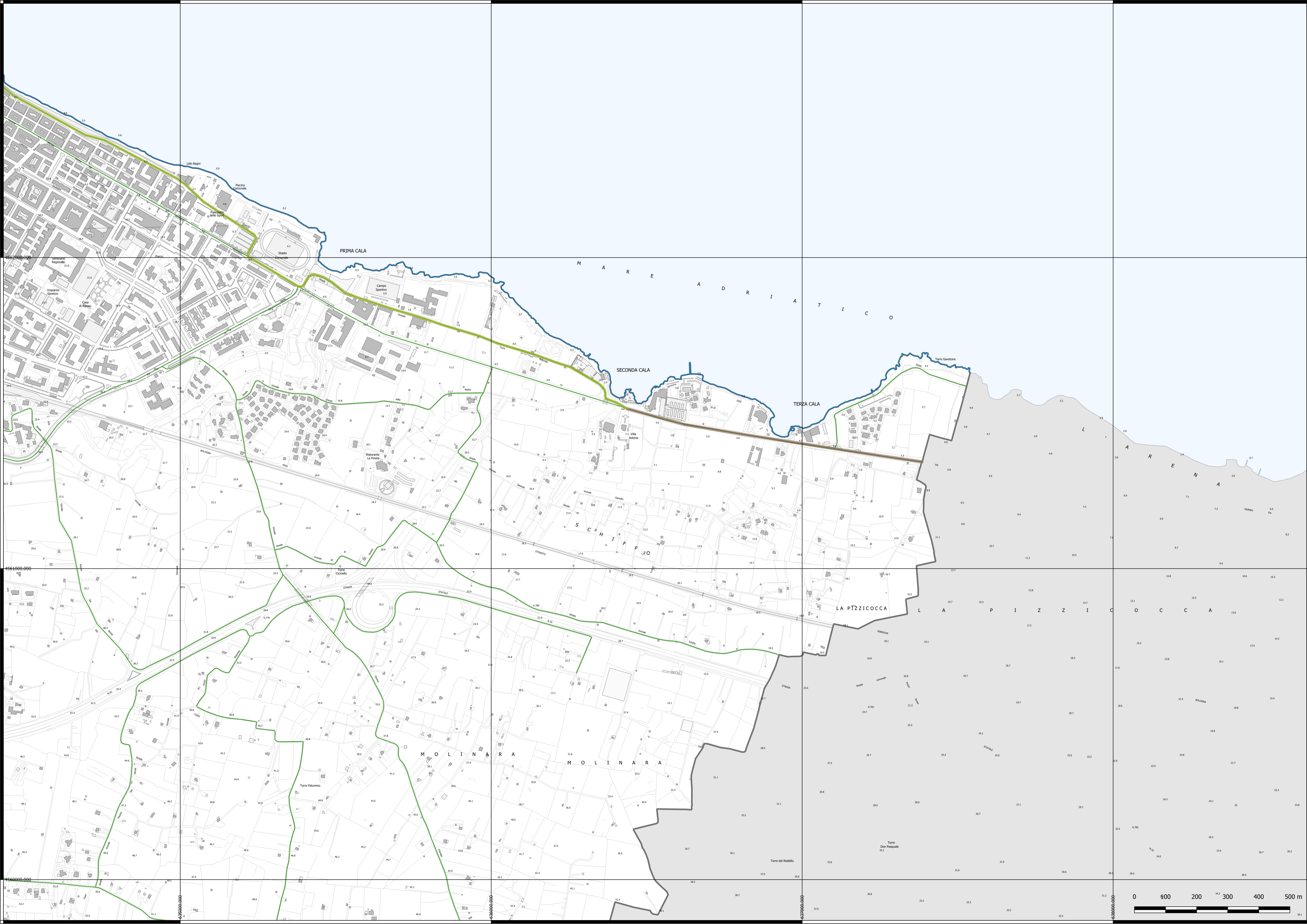
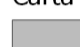



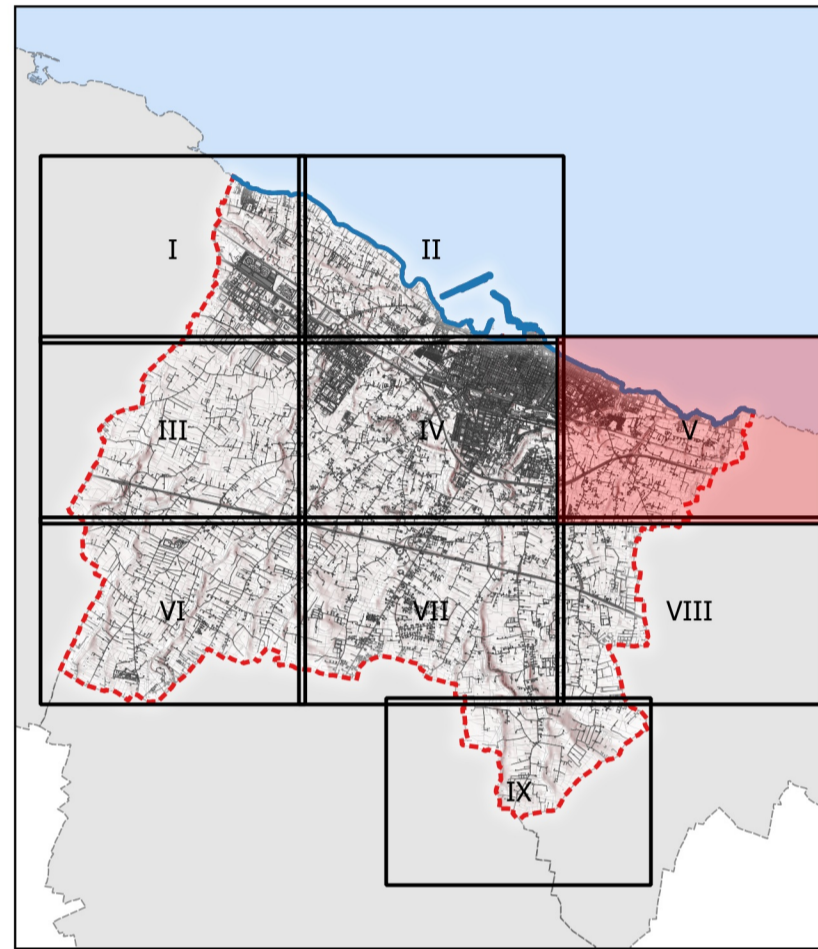


-  UCP - Strade a valenza paesaggistica
-  UCP - Strade panoramiche
-  UCP - Circuito ciclabile comunale



CARTOGRAFIA BASE

-  Carta Tecnica Regionale
-  Edifici
-  Limite Amministrativo
-  Linea di costa



Città di MOLINFETTA
Settore Territorio

ADEGUAMENTO DEL P.R.G.C. AL P.P.T.R.
Art. 97 NTA del Piano Paesaggistico Territoriale Regionale

Serie 6
IL SISTEMA DELLE TUTELE
6.3 STRUTTURA ANTROPICA E STORICO CULTURALE

6.3.2 Componenti dei valori percettivi

Tavola V

Sindaco **Tommaso Minervini**
Assessore all'Urbanistica **Pietro Mastropasqua**
Dirigente settore territorio e RUP **Ing. Alessandro Binetti**
Supporto esterno alla progettazione **Ing. Mario Emilio de Gennaro,**
Geom. Alessandro de Robertis
Supporto tecnico esterno al RUP **Arch. Giambattista del Rosso,**
Ing. Domenico Modugno,
Geom. Vito Pappagallo

