



PIANO PARTICOLARREGGIATO COMPARTO "B.2.1."

Tavola SEZIONI STRADALI

2.07

SCALA METRICA 1:500

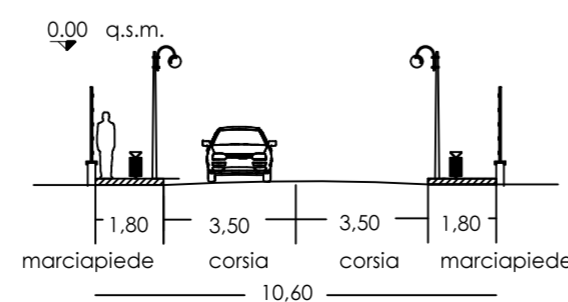
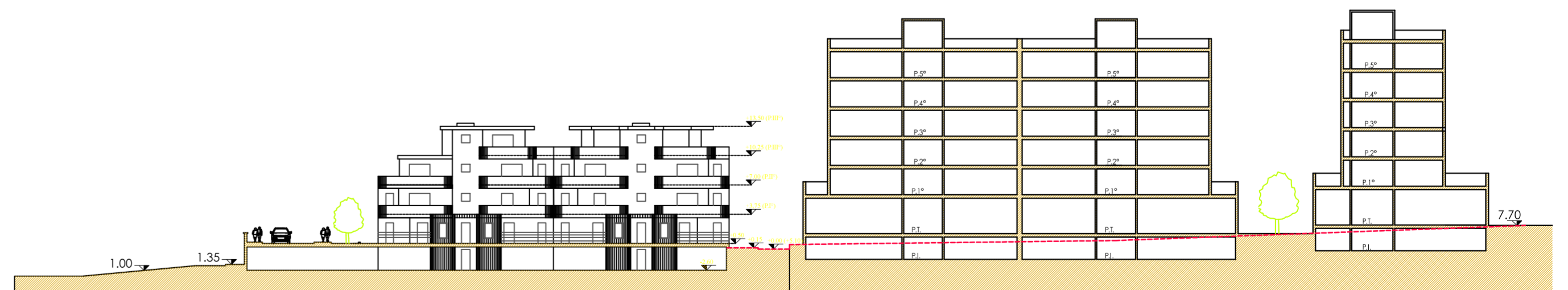
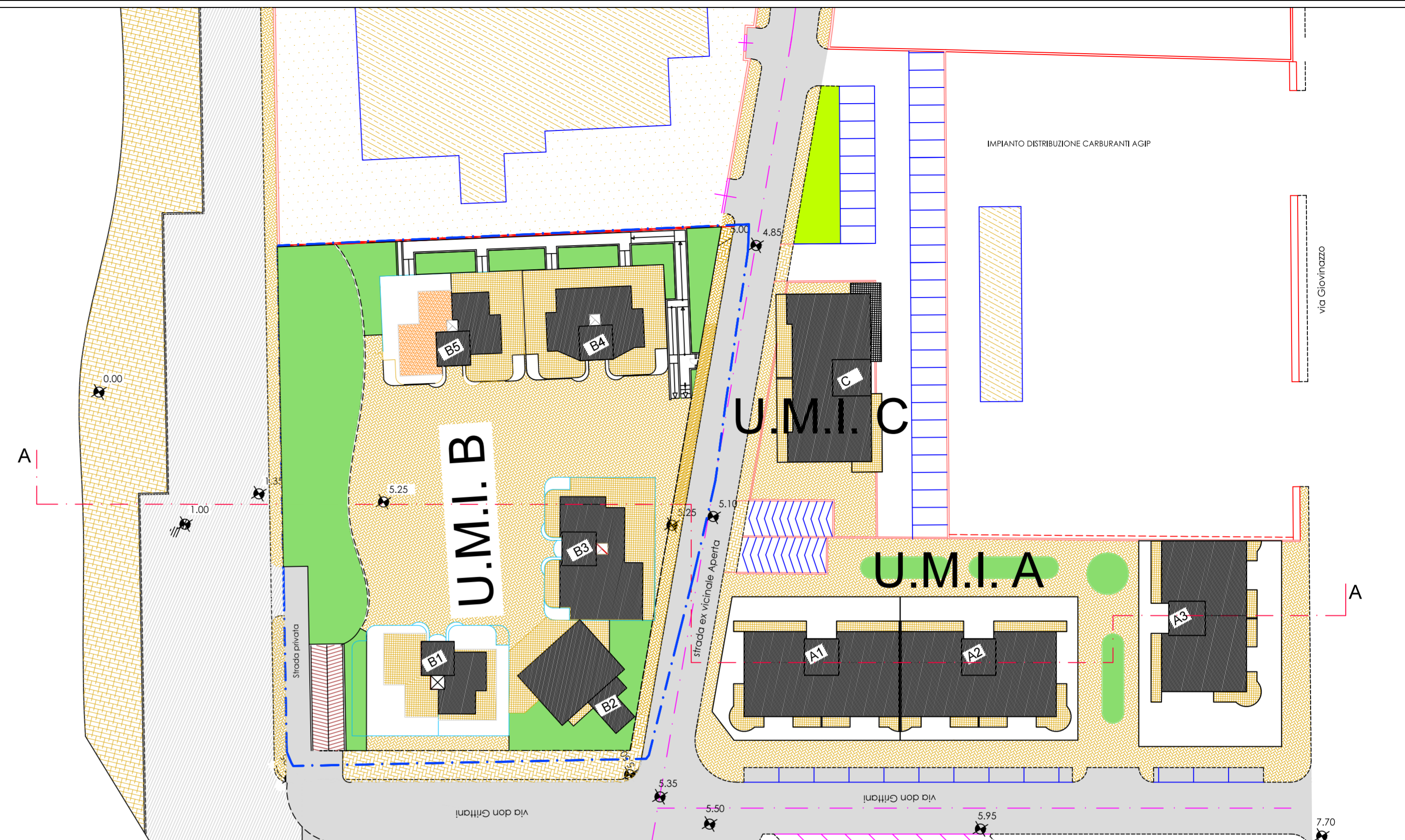
Progetto: ing. Rocco ALTOMARE  
 Coprogettisti (esterni): arch. Rosalba CASTELLANO, ing. Gaetano DI MOLA, arch. Fabrizio GIGOTTI  
 Responsabile Unico Procedimento: ing. Rocco ALTOMARE



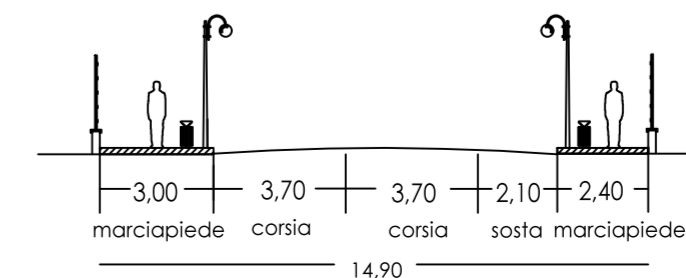
Dirigente Settore Territorio  
ing. Rocco ALTOMARE

Sindaco  
avv. Antonio AZZOLLINI

Aprile 2010



Sezione stradale Via ex vicinale aperta



Sezione stradale Via Don Grittani