

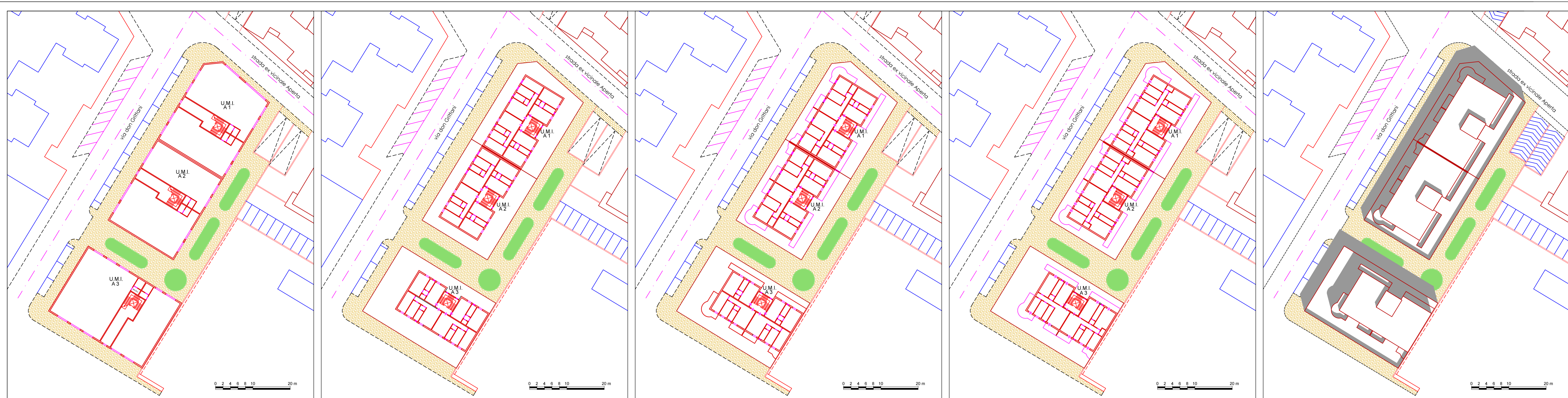


Progetto: ing. Rocco ALTOMARE  
Coprogettisti (esterni): arch. Rosalba CASTELLANO, ing. Gaetano DI MOLA, arch. Fabrizio GIGOTTI  
Responsabile Unico Procedimento: ing. Rocco ALTOMARE



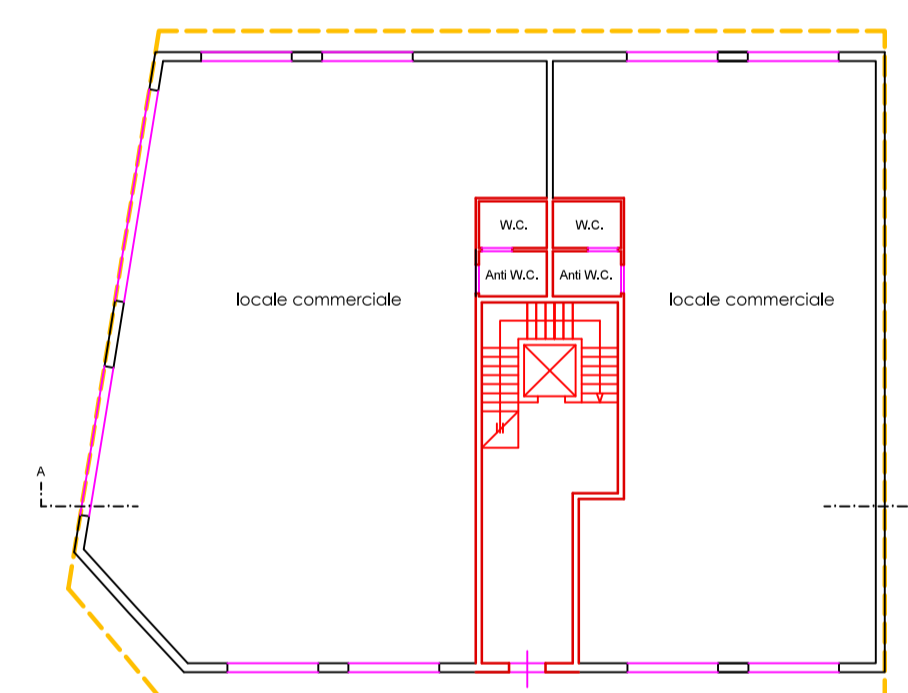
Direttore Settore Territorio: ing. Rocco ALTOMARE  
Sindaco: avv. Antonio AZZOLLINI

Aprile 2010

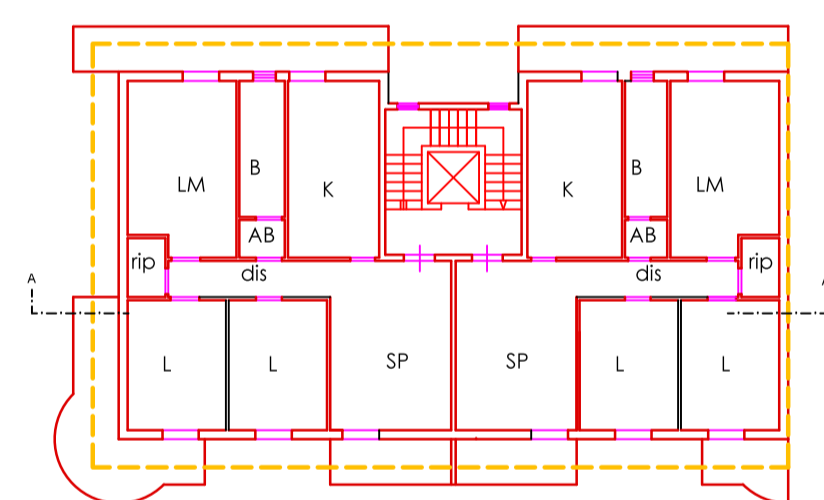


### Tipologia A1

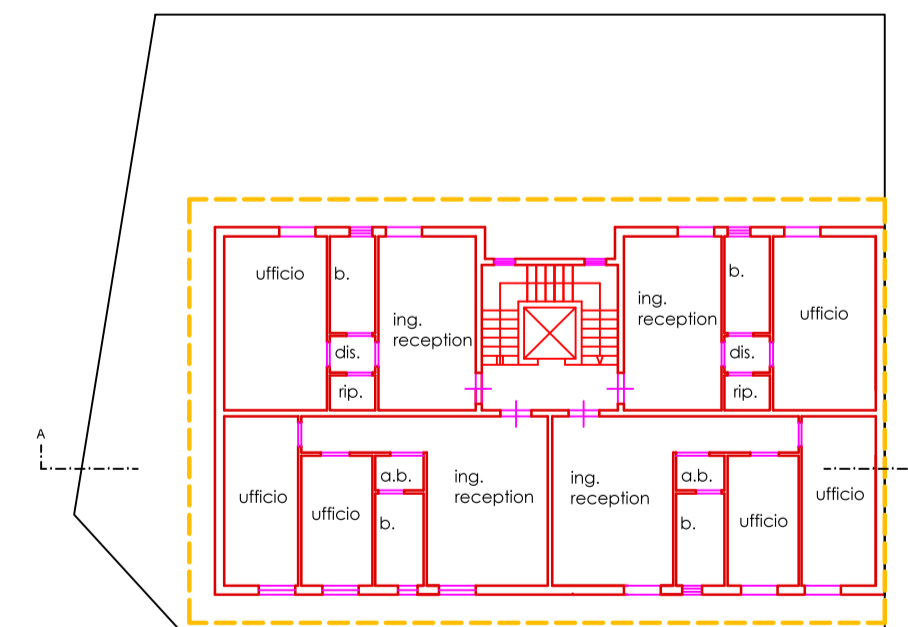
#### PIANTA PIANO TERRA



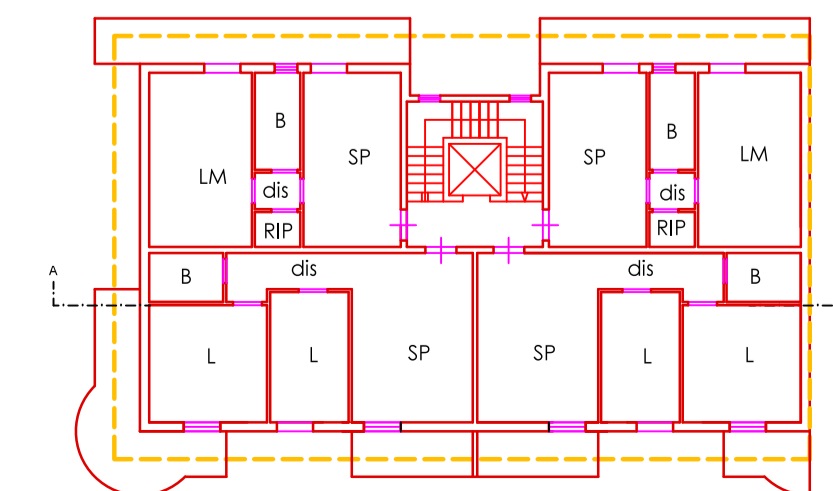
#### PIANTA PIANO TIPO



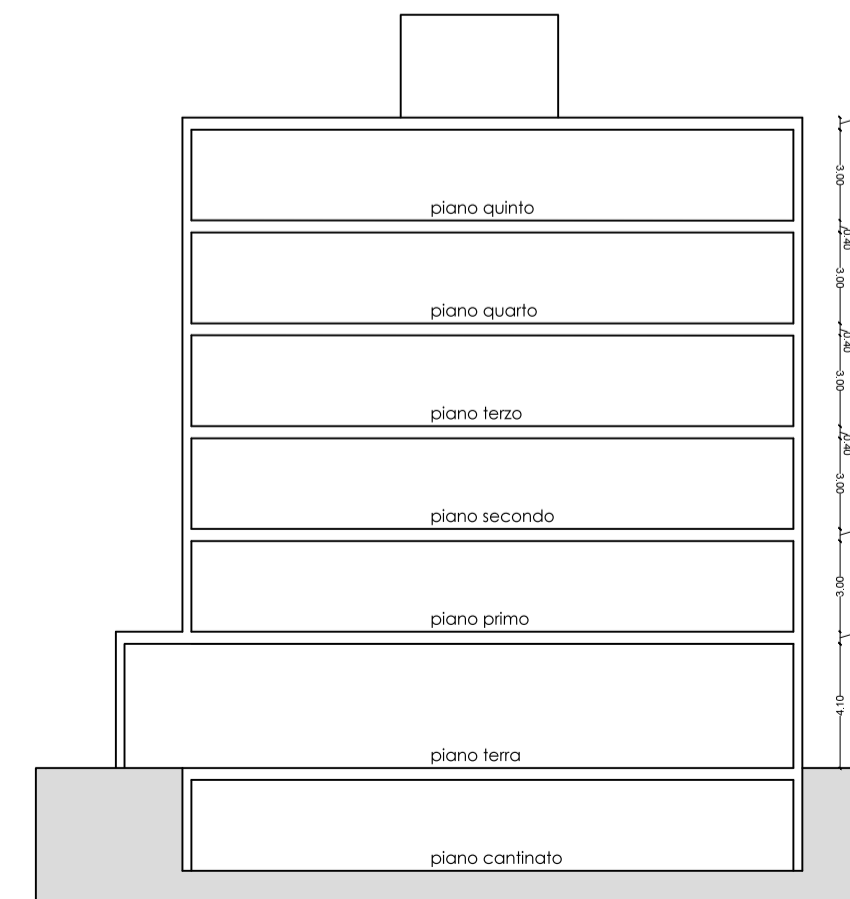
#### PIANTA PIANO PRIMO



#### PIANTA PIANO SECONDO



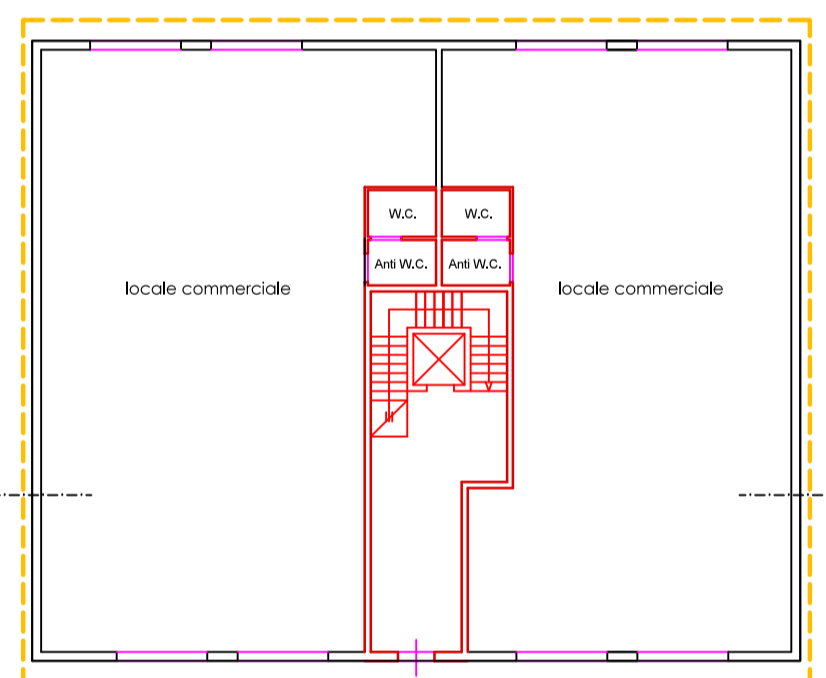
#### SEZIONE A-A'



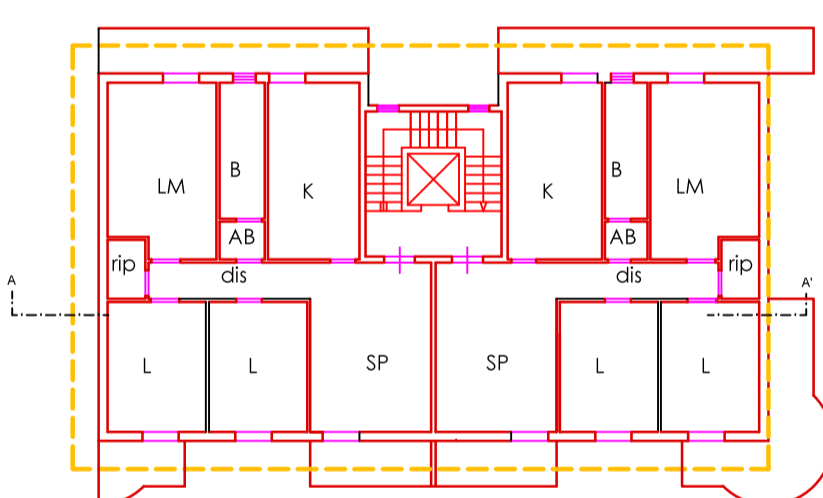
0 1 2 3 4 5 m

### Tipologia A2

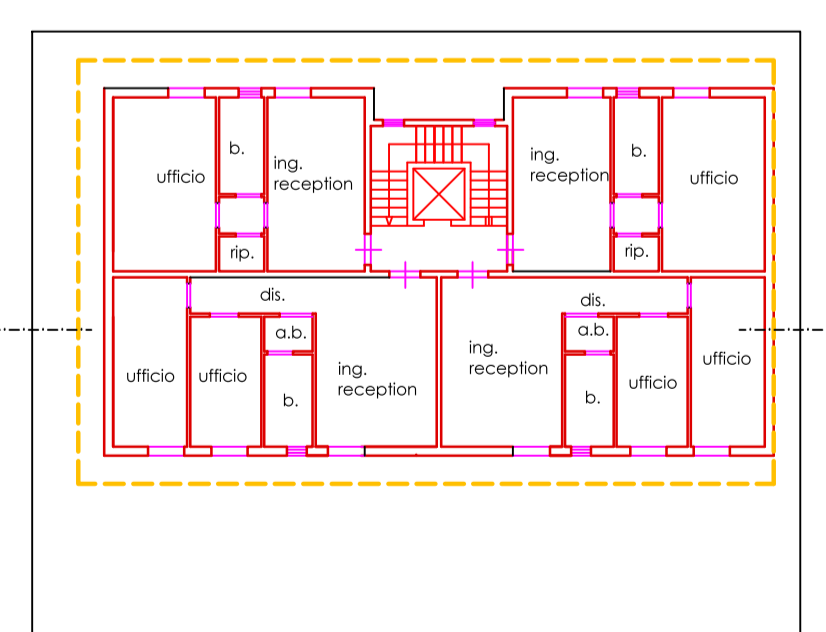
#### PIANTA PIANO TERRA



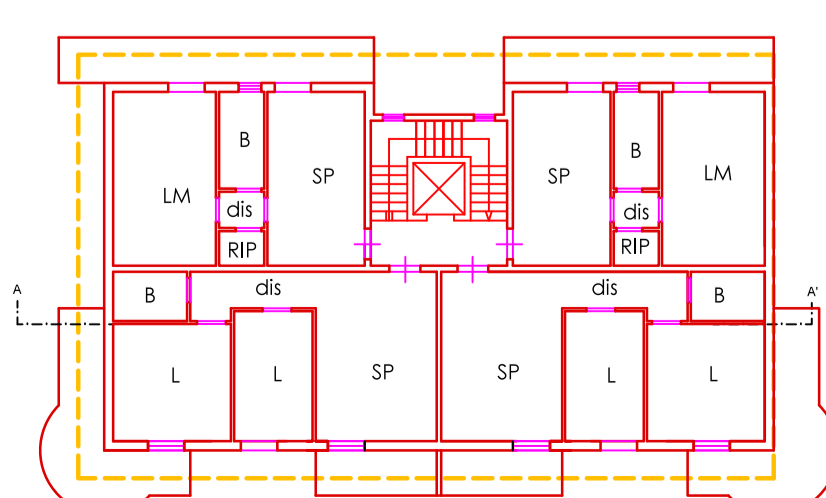
#### PIANTA PIANO TIPO



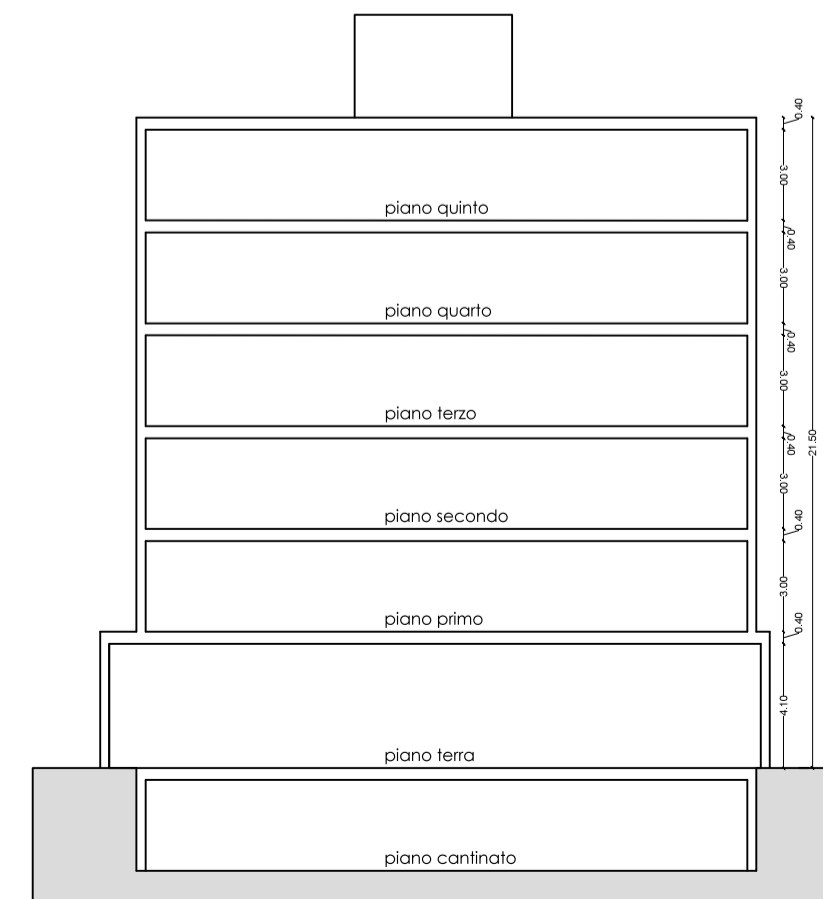
#### PIANTA PIANO PRIMO



#### PIANTA PIANO SECONDO



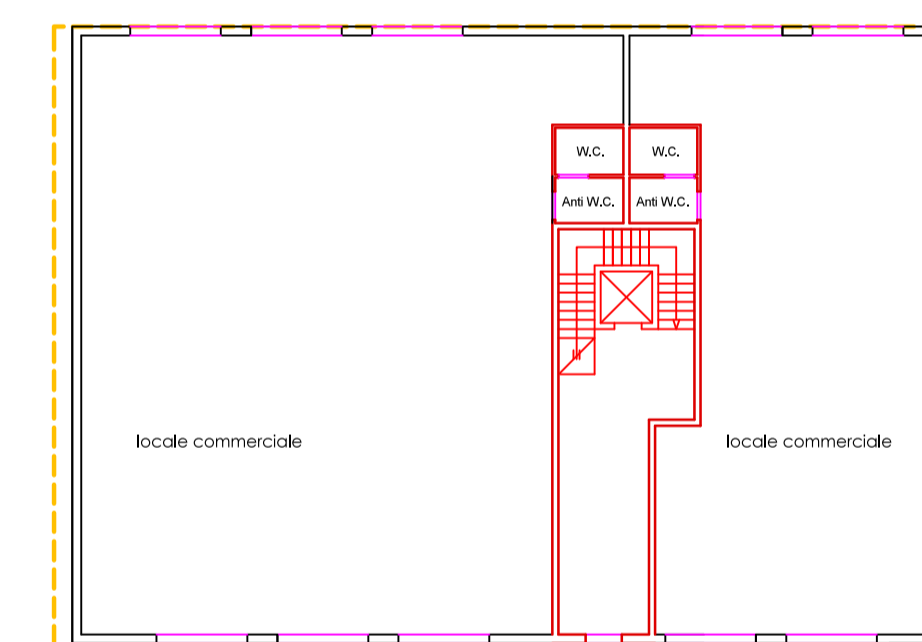
#### SEZIONE A-A'



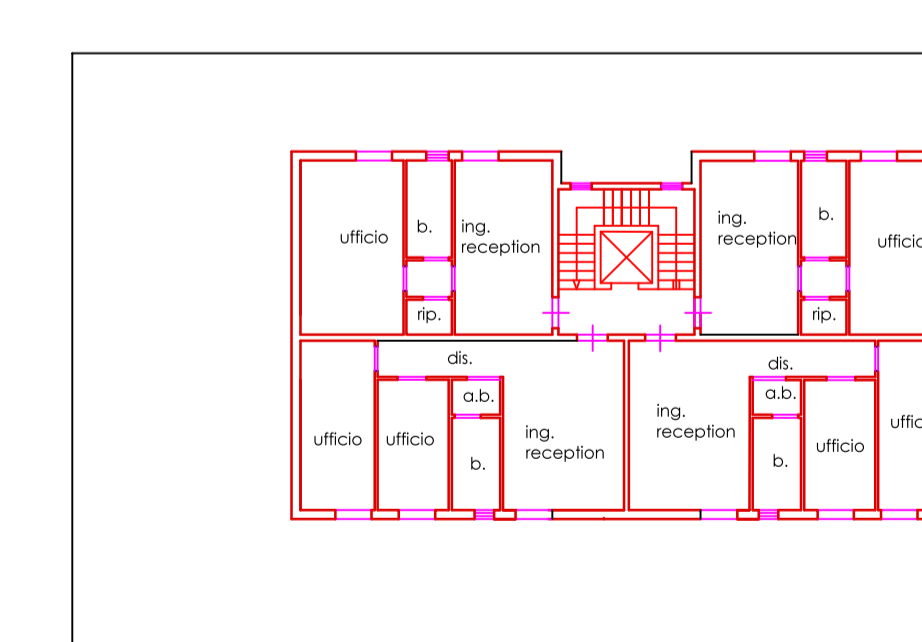
0 1 2 3 4 5 m

### Tipologia A3

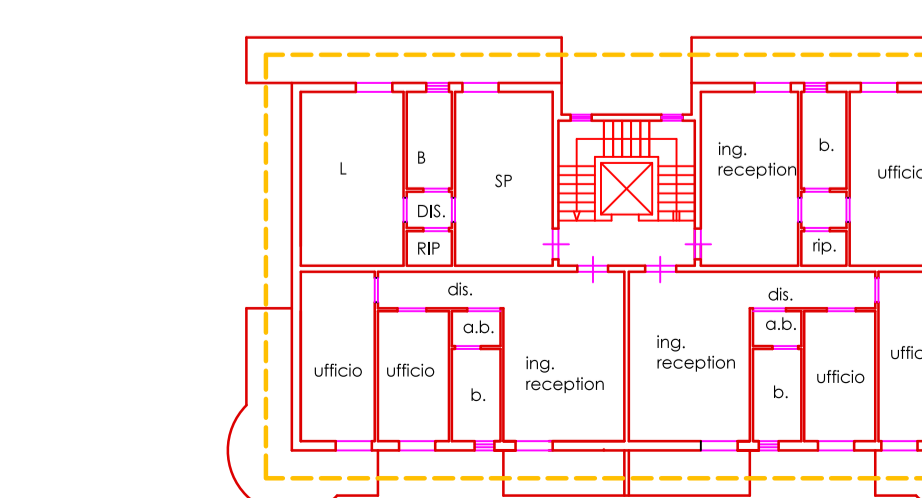
#### PIANTA PIANO TERRA



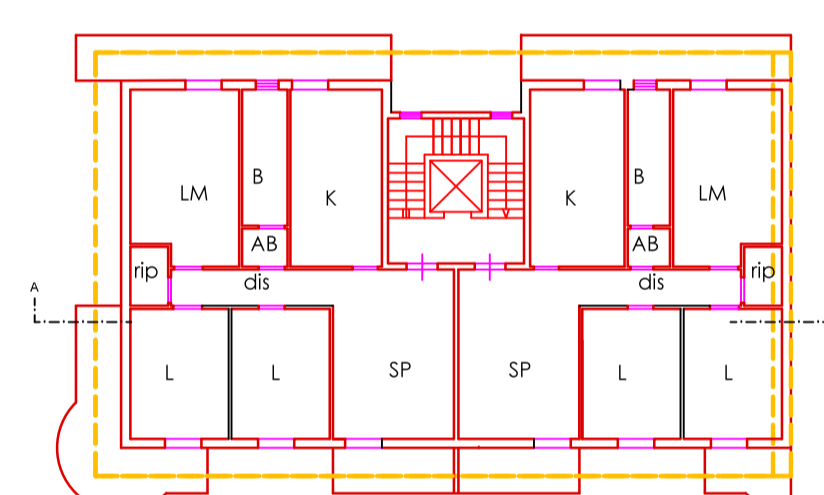
#### PIANTA PIANO PRIMO



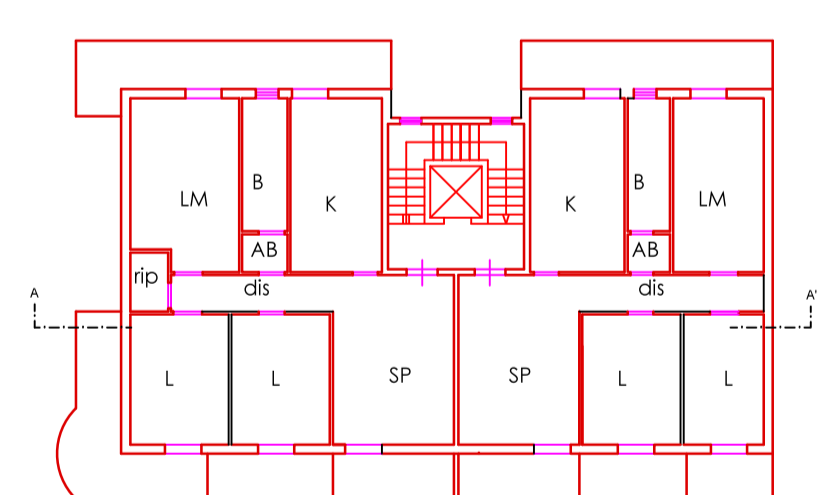
#### PIANTA PIANO SECONDO



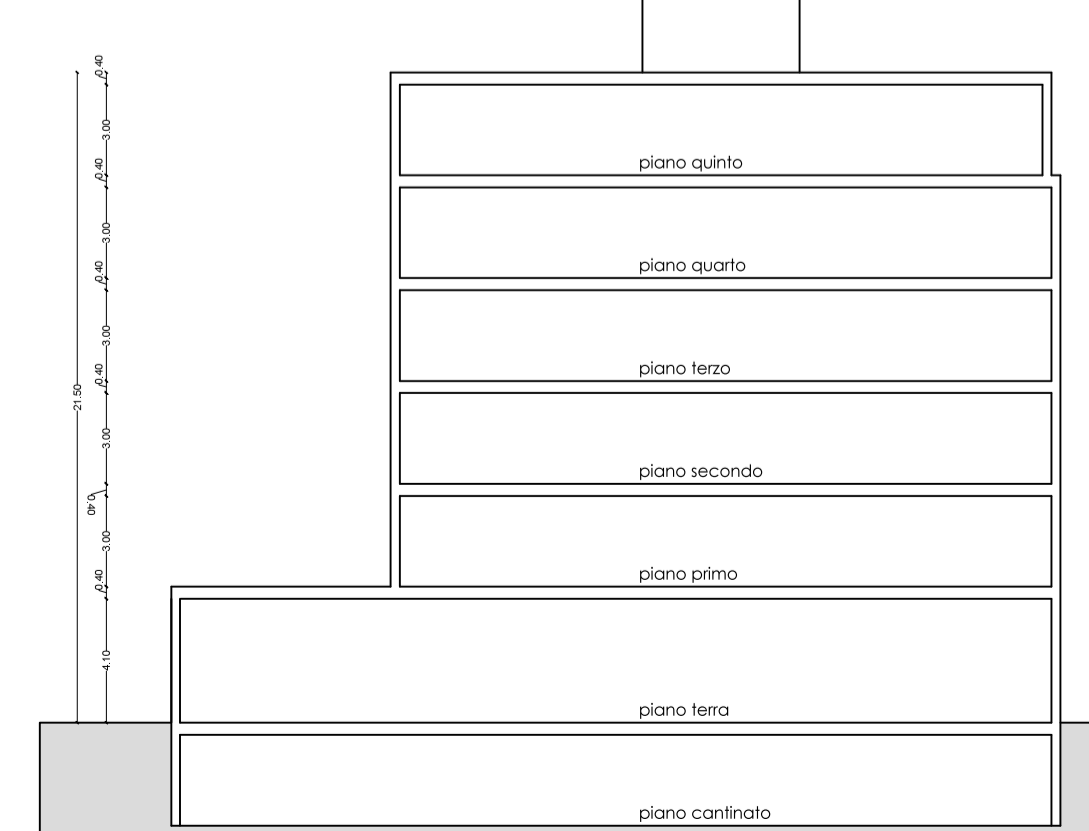
#### PIANTA PIANO TIPO



#### PIANTA PIANO QUINTO



#### SEZIONE A-A'



0 1 2 3 4 5 m