



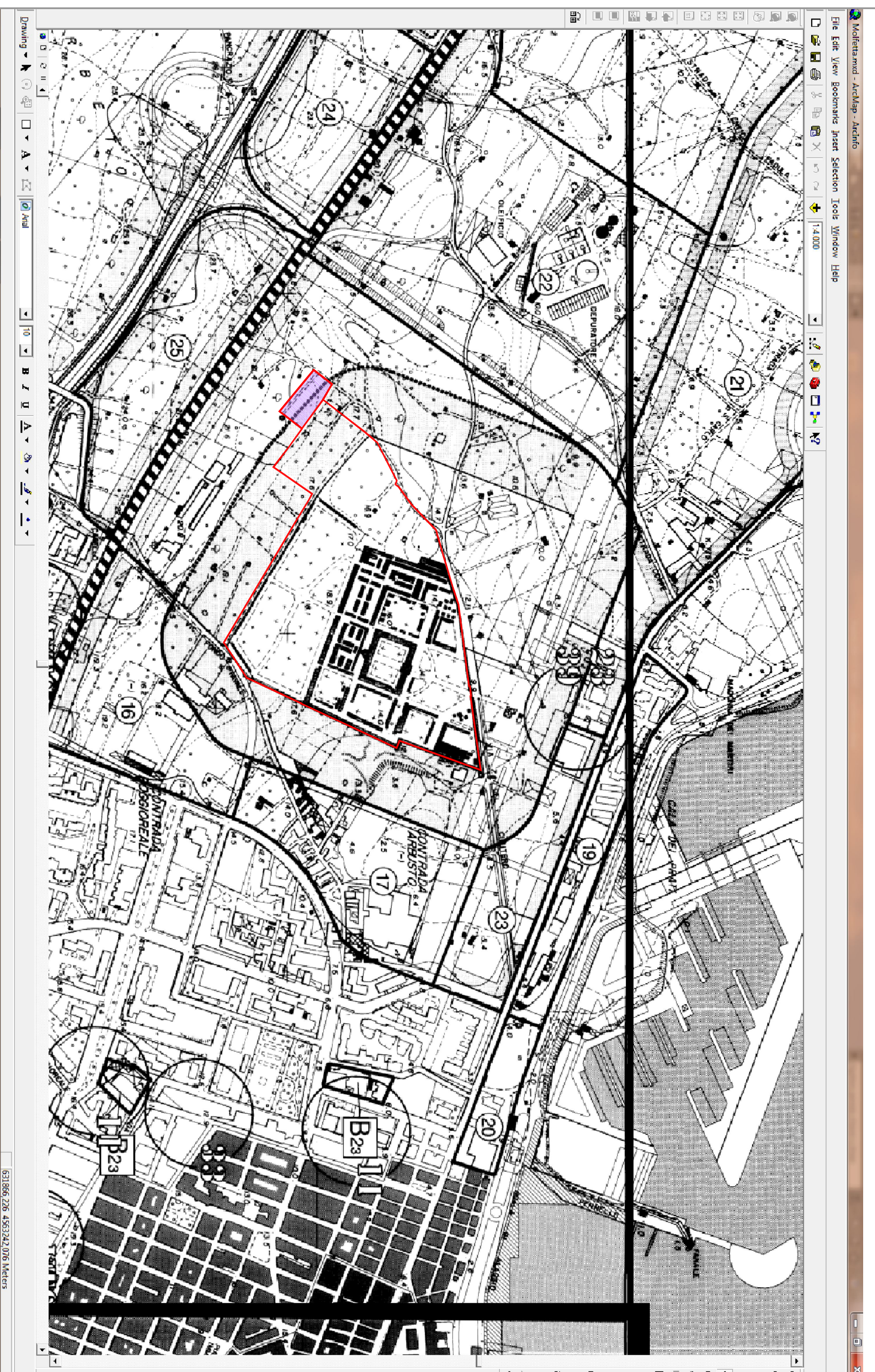
Comune di Molfetta  
Progetto di ampliamento area cimiteriale  
In variante al PRGC

Progettazione:  
Ing. Assuntino Benati  
Collaboratori tecnici alla progettazione:  
geom. Pasquale de Tullio  
geom. Umberto Strati  
Responsabile Unico del Procedimento  
arch. Lazzaro Papagallo

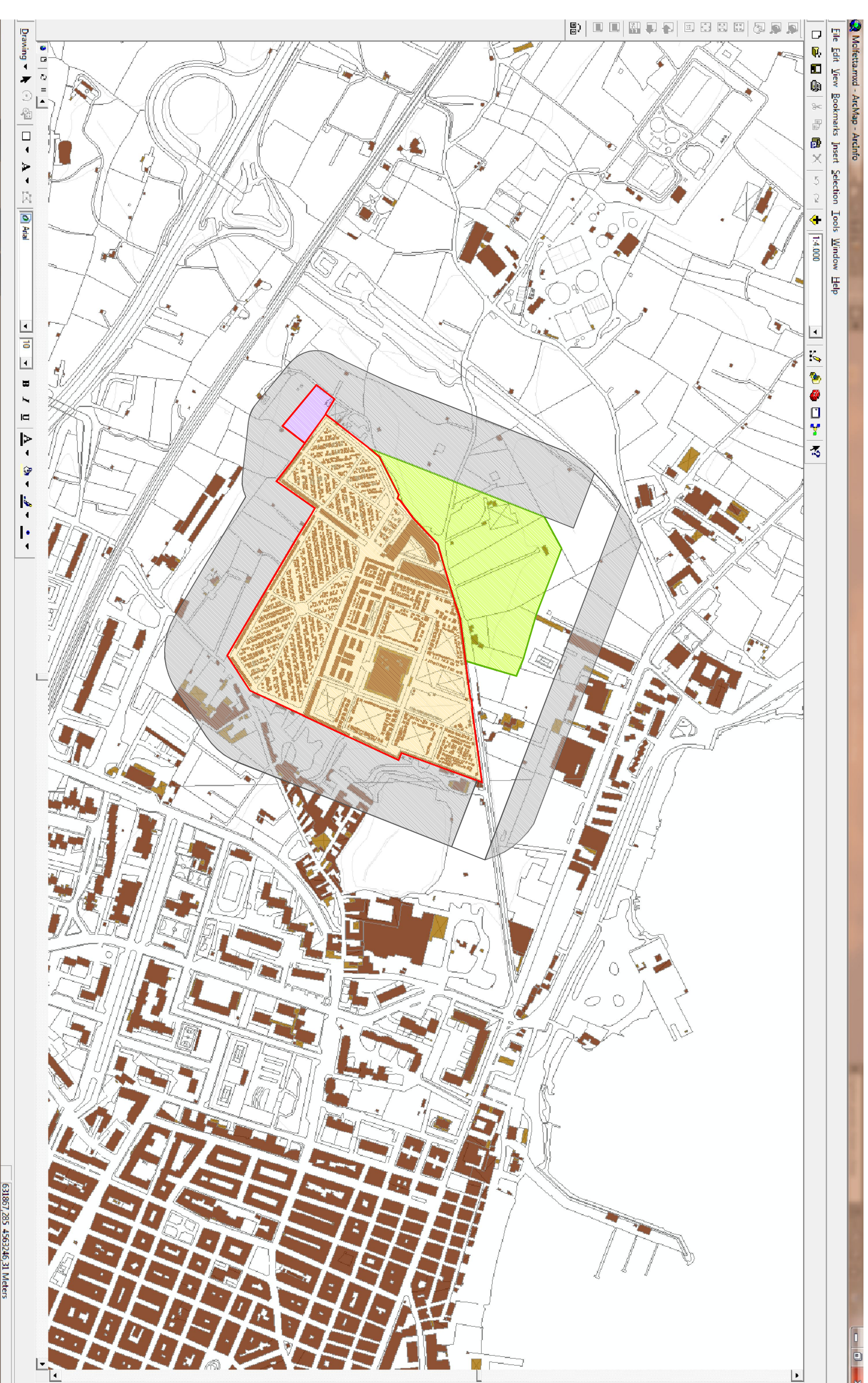
Inquadramento territoriale,  
strutture, pianificazione e vincolistica  
01  
rapporto 1:5000

novembre 2017  
Il Sindaco  
Tommaso Minervini

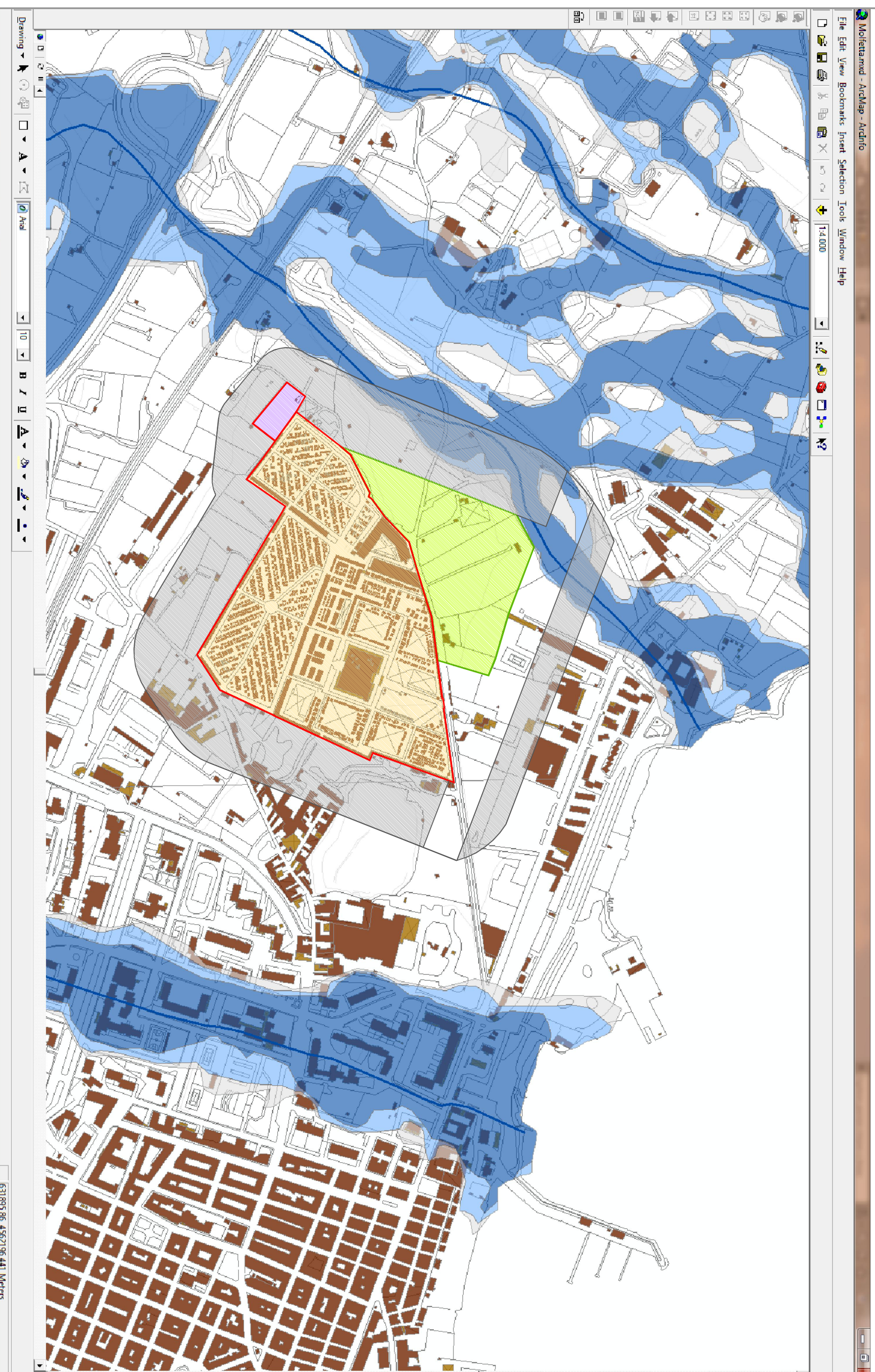
Stralcio PRGC - rapp. 1:5000



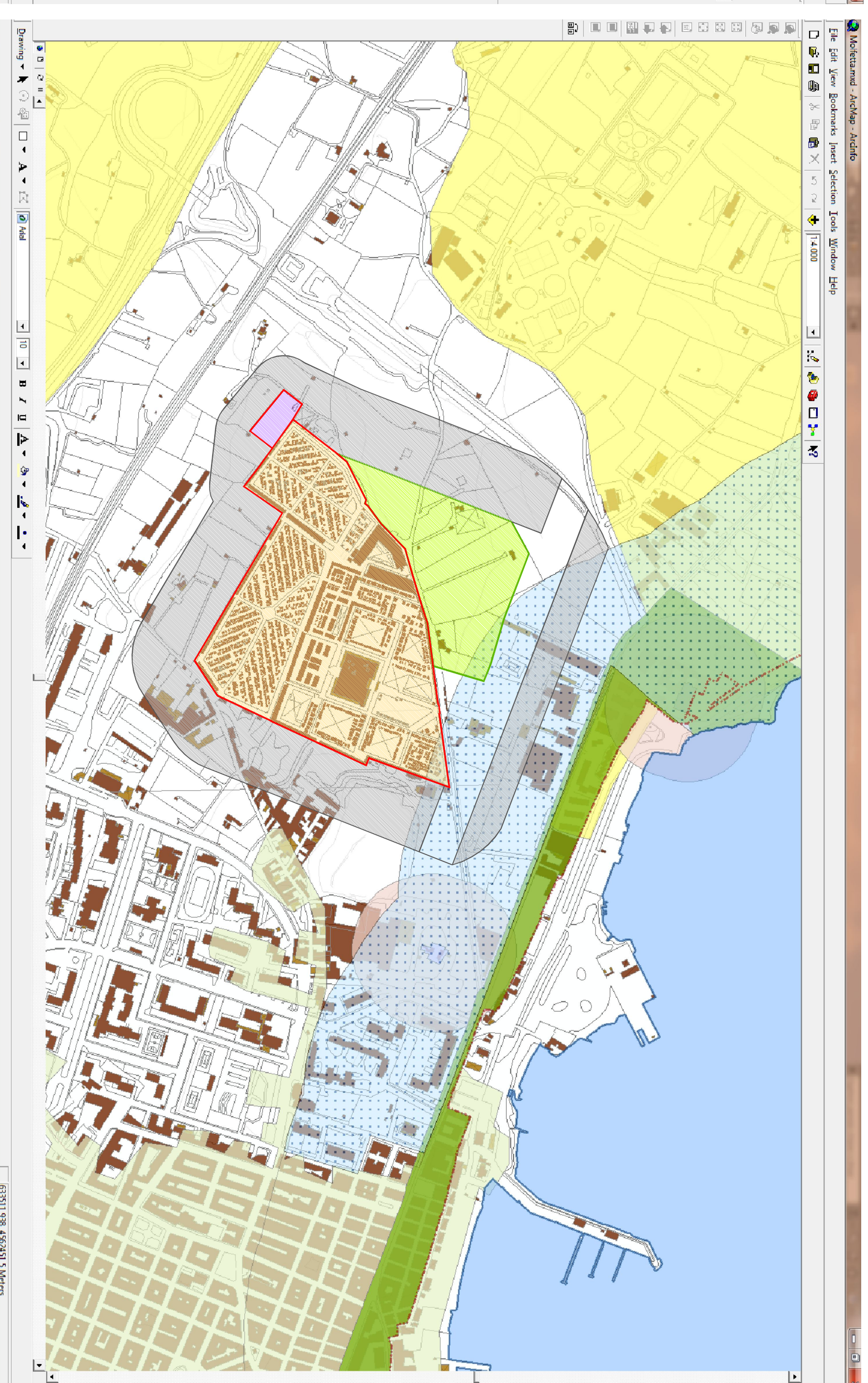
Carta Tecnica Regionale - rapp. 1:5000






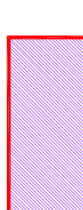
Stralcio PAI aree a pericolosità idraulica - rapp. 1:5000



Stralcio PPTR vincoli paesaggistici - rapp. 1:5000



legenda

-  Area cimiteriale esistente
-  Ampliamento sede cimiteriale da PRGC
-  Area di rispetto
-  Area di ampliamento prevista nel presente progetto